

Habitat Adventure Trail Scavenger Hunt

ANSWER KEY



ANSWER KEY

Station #1 - Woodpecker Drumming

What protects a woodpecker's brain during its head-banging jam sessions?

Spongy bone at the front of their skulls



List the 7 species of woodpeckers found at Medoc Mountain State Park. Check off any that you see.

Red-bellied woodpecker

Downy woodpecker

Hairy woodpecker

Yellow-bellied sapsucker

Northern flicker

Pileated woodpecker

Red-headed woodpecker

Station #2 - Woodland Café

What meal did you choose for which type of animal?

Various answers of an animal with a corresponding food possible:

Squirrel: assorted tree nuts, pine seeds, seasonal fruits, bird eggs, mushrooms

Box turtle: gastropods (snails & slugs), wild mushrooms, wiggly worms, reptiles and amphibians, flowers and berries

Carolina Wren: plump caterpillars, wiggly worms, assorted arthropods, reptiles and amphibians, seeds and berries



Station #3 - Explore the Mountain

How did Medoc Mountain form?

A pocket of magma (liquid rock or magma chamber) that cooled underground into granite



Station #4 - Balance Like a Squirrel

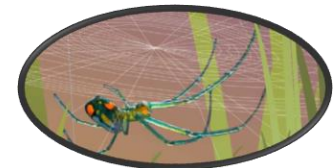
What helps a squirrel balance?

Their long bushy tails

Station #5 - Climb Like a Spider

Where does a spider walk so it doesn't get caught in its own web?

On the strands of non-sticky silk that make up the spokes of their circular "orb" web



Station #6 - Wildlife Spotting

Why might you not see any wildlife?

Various answers possible: Stay high in the trees, hide underground, nocturnal/only come out at night, easiest to spot early in the morning

Station #7 - Frog Music

How do frogs and toads make their music?

By slowly letting air out of a sac that vibrates in their throat



Station #8 - Waterdog Rock Hop

Where should you look if you want to see a Neuse River waterdog?

Under large granite rocks or in burrows in the creek bank in clean water in streams and rivers of the Neuse and Tar River basins in North Carolina including Little Fishing Creek at Medoc Mountain. (any portion of this is an acceptable answer)