



With Wachovia: The Environment & You

**Facilitated by Daria Milburn –
Environmental Affairs**

Introduction

Session Objectives

The purpose of this session is to learn:

- How your daily activities impact the environment.
- What changes you can make to reduce your impact.

SAMPLE CONTENT

Introduction

Agenda

Our impact on the environment

- Water Use
- Energy Use
- Waste
- Air Quality

How you can help make a change

- Home
- Travel
- Work

Our Impact
on the
Environment

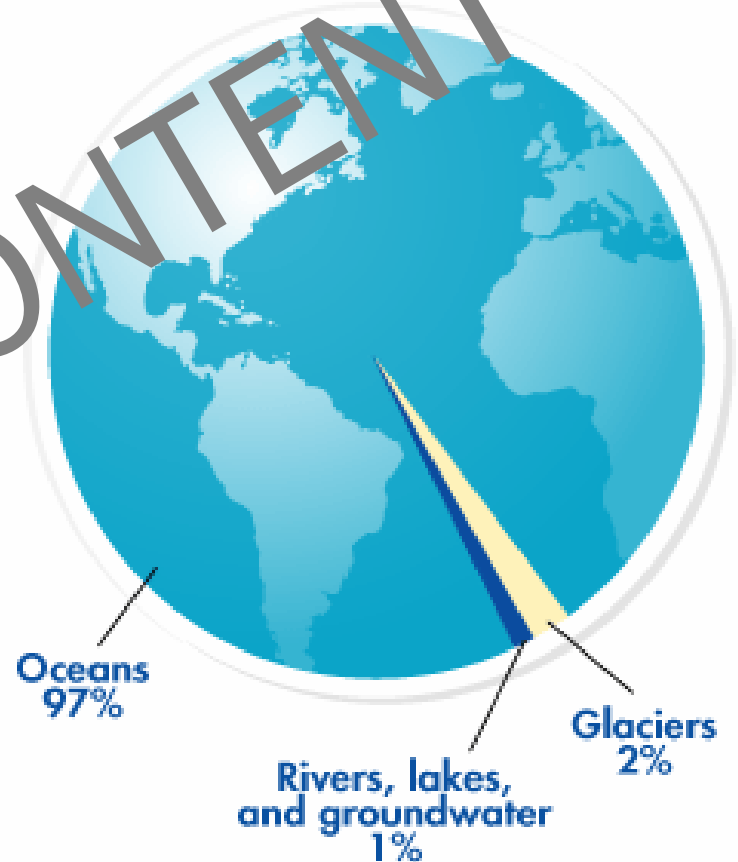
SAMPLE CONTENT

Water Use

Our Supply

- Less than 1% of water is available for human use.
- More than 99% is ocean water or glaciers.

Usable water in the world

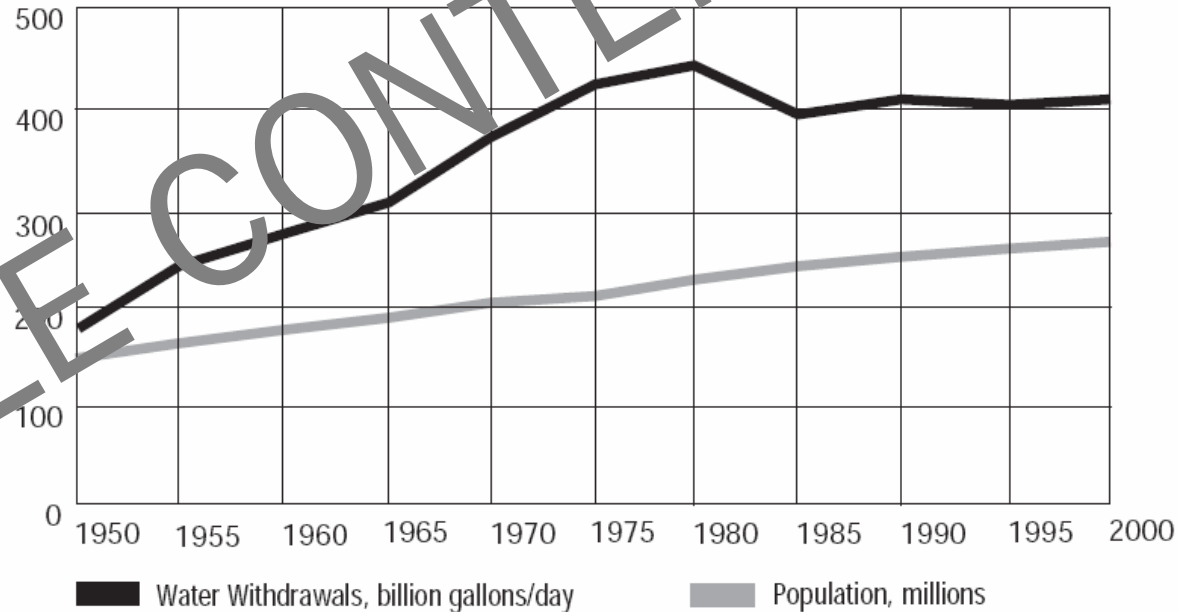


Water Use

Typical Use

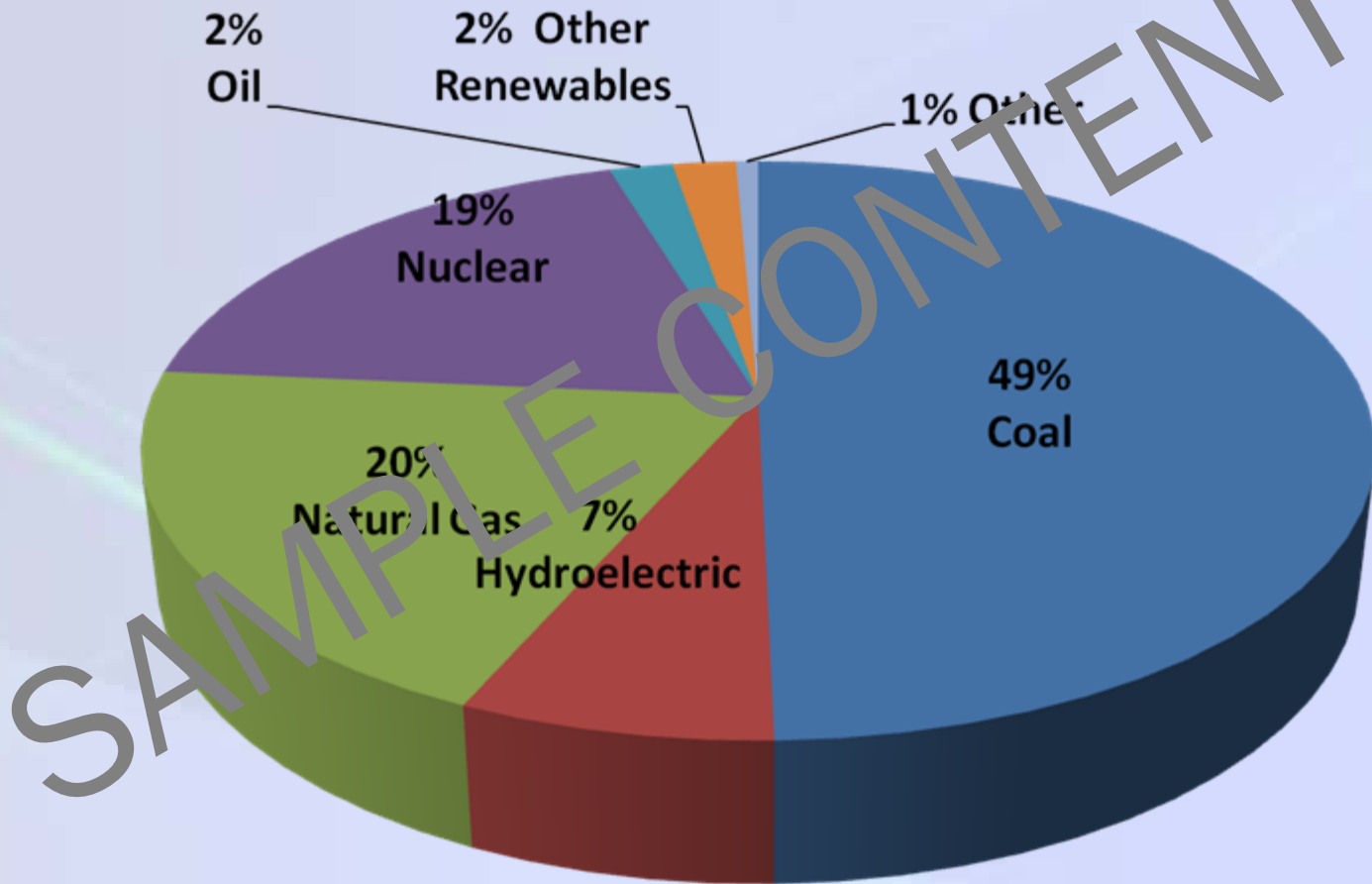
- On average, each American uses 100 gallons of treated water each day.
- Since 1950 water use in the US has increased faster than the population.

Figure 1: Trends in population and water withdrawals in the United States from 1950 to 2000 (Data Source: Hutson, et al. *Estimated use of water in the United States in 2000*. U.S. Geological Survey Circular 1268, Washington, D.C.).



Energy Use

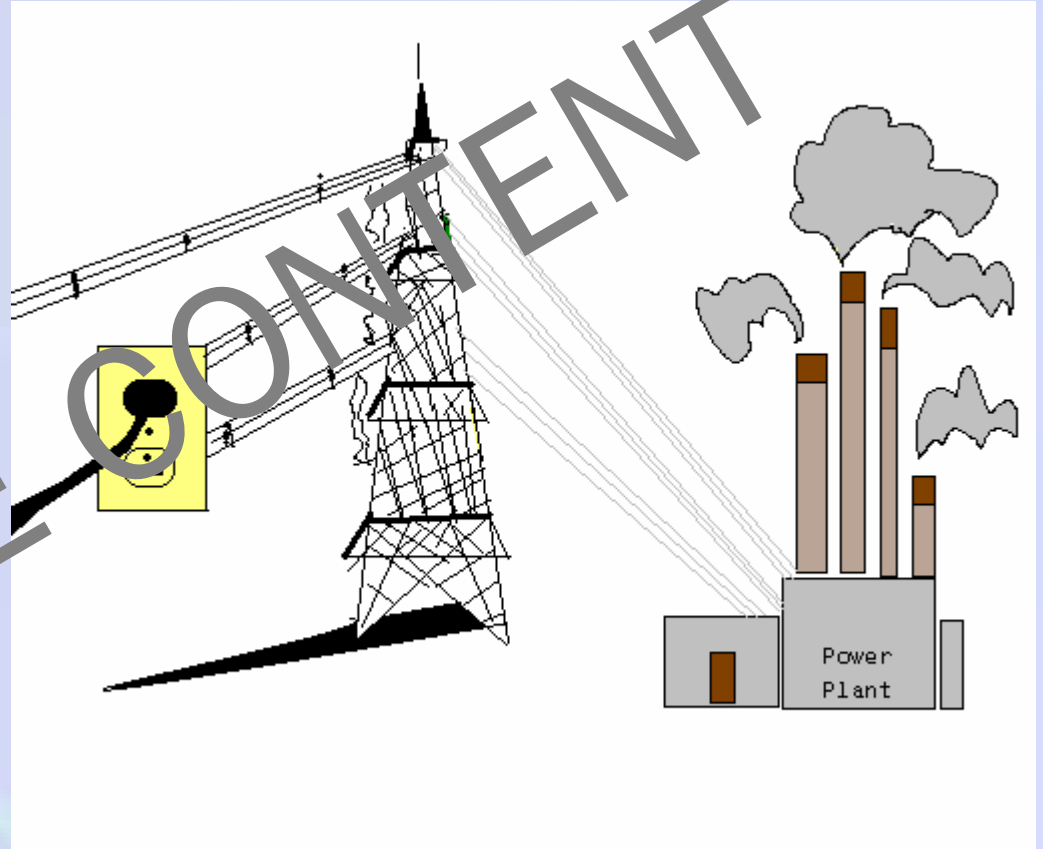
How the United States Produces Energy



Energy Use

Energy Wasters

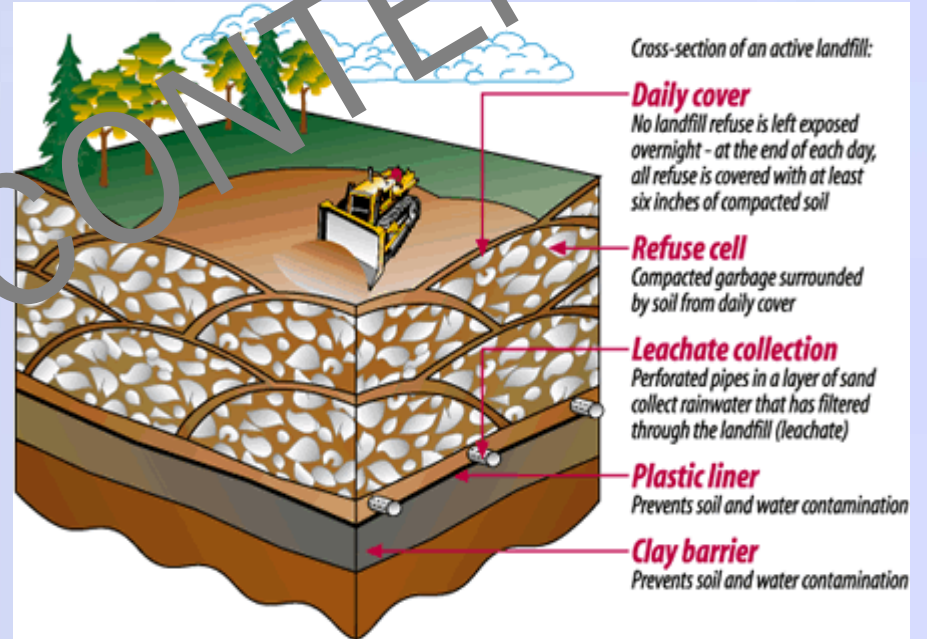
- Inefficient appliances
- Lights left on when not in use
- Chargers left plugged in after charging is complete



© C. Wyatt 2008

Waste

Where does our waste go? - Landfills.



Air Quality

Transportation Emissions

- Hydrocarbons
- Nitrogen Oxides
- Carbon Monoxide
- Carbon Dioxide
- Particulates



How You
Can Help
Make a Change

SAMPLE CONTENT

Toilet

- The leading water consumer in the house
- Older toilets may use 3.5-7.0 gallons of water per flush

Ways to save:

- Check for leaks
- Use a toilet tank divider
- Install a new toilet



At Home

Energy Use

Appliances

- Water heating is a major use of energy
 - Dishwasher: 80%
 - Washing Machine: 90%

Ways to save.

- Only wash full loads
- Use cold water cycles as often as possible
- Air dry



At Home

Energy Use

Choose Efficient Appliances

Look for the Energy Star Label and Energy Guide.



Based on standard U.S. Government tests

ENERGYGUIDE

Refrigerator-Freezer
With Automatic Defrost
With Top-Mounted Freezer
With 18 Inch - 1/2 Door-Ice Service

XYZ Corporation
Model ABC-W
Capacity: 23 Cubic Feet

Compare the Energy Use of this Refrigerator with Others before You Buy.

This Model Uses 776 kWh/year	
Energy Use (kWh/year) range of all similar models	
Uses Least Energy 742	Uses Most Energy 836

kWh/year (kilowatt-hours per year) is a measure of energy (electricity) use. Your utility company uses it to compute your bill. Only models with 22.5 to 24.5 cubic feet and the above features are used in this scale.

**Refrigerators using more energy cost more to operate.
This model's estimated yearly operating cost is:**

\$68

Based on a 1995 U.S. Government national average cost of 8.4¢ per kWh for electricity. Your actual operating cost will vary depending on your local utility rates and your use of the product.

Important: Removal of this label before consumer purchase is a violation of Federal law (42 U.S.C. 6302).

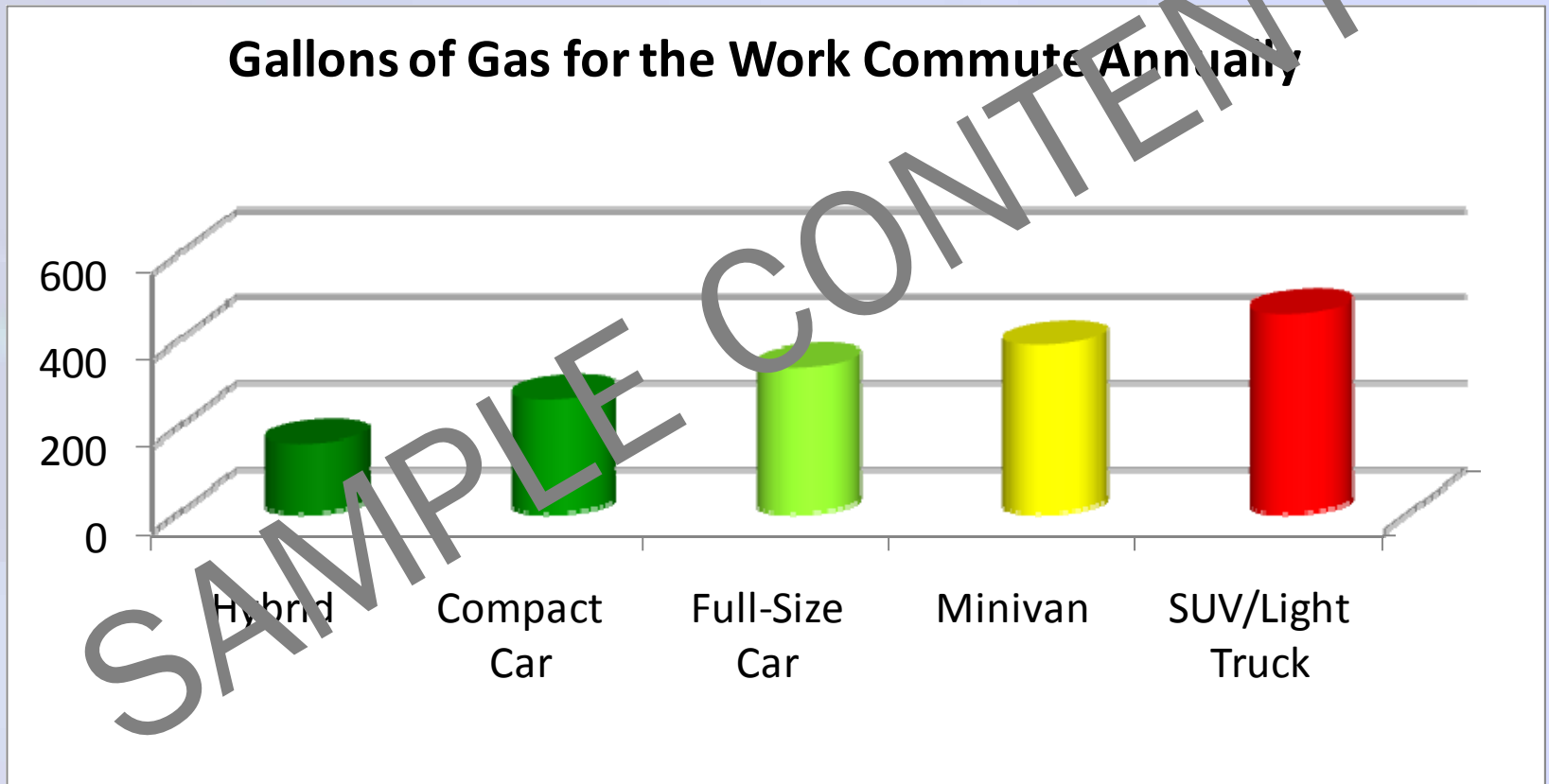
1

2

Traveling

Air Quality

Commuting Costs



At Work

Waste

Reduce Paper Waste

- One year of copy paper consumes 15.8 million tons of wood
- A single office worker uses approximately 10,000 sheets of paper each year

Ways to Save

- Print and copy documents double-sided
- Use scrap paper for printing and notes
- Print only the number of copies necessary
- Use email for editing and communications



Credits

Wachovia would like to thank the following UNC undergraduate students who worked to develop this content as an Environmental Capstone Project:

Elisabeth Bradner

Henry Colangelo

Jackie Knee

Kevin Plotkin

Dana Williams

Christina Wyatt

Thanks also to the project directors from the Institute for the Environment.

Kathleen Gray, MSPH

Elizabeth Shay, PhD